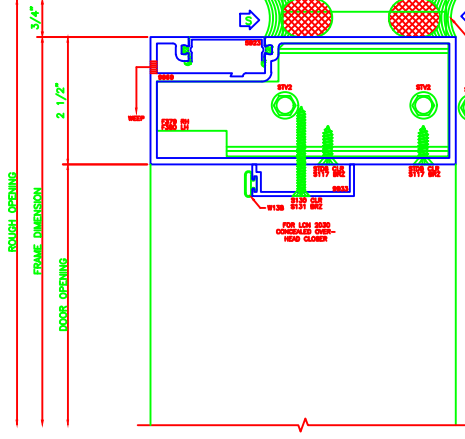


837 HEADER
5600 6

ERASE NOTE:
OUTSWING HEAD FOR SURFACE
CLOSERS



828 C.O.C. HEAD
5600 6

FOR USE WITH
HARDWARE FOR
HEAD CLASPS

FOR USE WITH
HARDWARE FOR
OVER-
HEAD CLOSURE

841 O.G. VERT.
5600 6

ERASE NOTE:
OUTSWING JAMB FOR OFFSET PIVOTS
OR BUTT HINGE AS SHOWN,
CONTINUOUS HINGE REQUIRES 1256

843 O.G. VERT.
5600 6

ERASE NOTE:
OUTSWING JAMB FOR OFFSET PIVOTS
OR BUTT HINGE AS SHOWN,
CONTINUOUS HINGE REQUIRES 1256

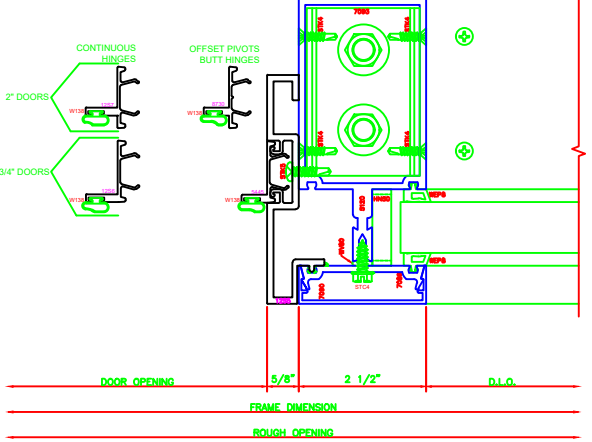
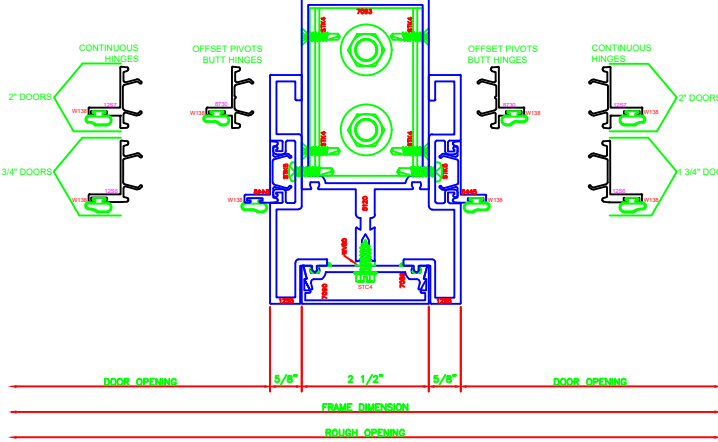
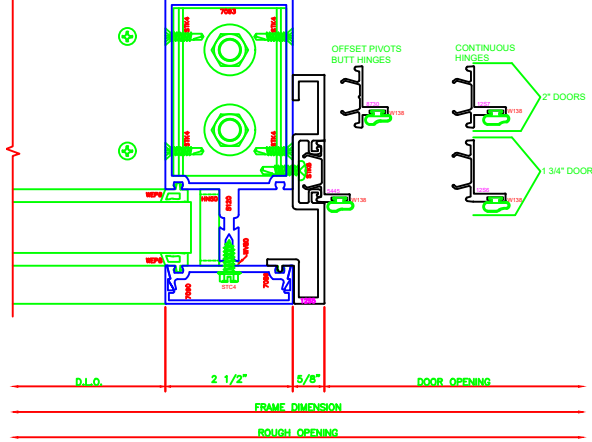
ERASE NOTE:
OUTSWING JAMB FOR OFFSET PIVOTS
OR BUTT HINGE AS SHOWN,
CONTINUOUS HINGE REQUIRES 1256

842 O.G. VERT.
5600 6

ERECTOR NOTE:
APPLY CONTINUOUS BEAD OF SEALANT
AROUND SHEAR BLOCK PRIOR TO SETTING
MULLION IN PLACE.

ERECTOR NOTE:
APPLY CONTINUOUS BEAD OF SEALANT
AROUND SHEAR BLOCK PRIOR TO SETTING
MULLION IN PLACE.

ERECTOR NOTE:
APPLY CONTINUOUS BEAD OF SEALANT
AROUND SHEAR BLOCK PRIOR TO SETTING
MULLION IN PLACE.



838 O.G. JAMB
5600 6

ERASE NOTE:
OUTSWING JAMB FOR OFFSET PIVOTS
OR BUTT HINGE AS SHOWN,
CONTINUOUS HINGE REQUIRES 1256

ERASE NOTE:
OUTSWING JAMB FOR OFFSET PIVOTS
OR BUTT HINGE AS SHOWN,
CONTINUOUS HINGE REQUIRES 1256

839 O.G. JAMB
5600 6

ERECTOR NOTE:
APPLY CONTINUOUS BEAD OF SEALANT
AROUND SHEAR BLOCK PRIOR TO SETTING
MULLION IN PLACE.

ERECTOR NOTE:
APPLY CONTINUOUS BEAD OF SEALANT
AROUND SHEAR BLOCK PRIOR TO SETTING
MULLION IN PLACE.

